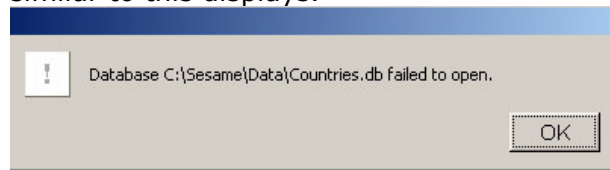


Sesame One-Sheets

Step-By-Step Quick Reference Guides

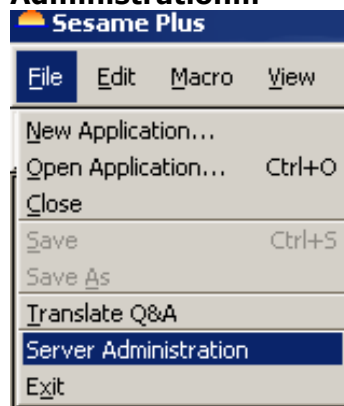
Unlocking an Application

If an application was closed incorrectly, the next time you open that application it will be locked. When attempting to open a locked Sesame application, a warning message similar to this displays.

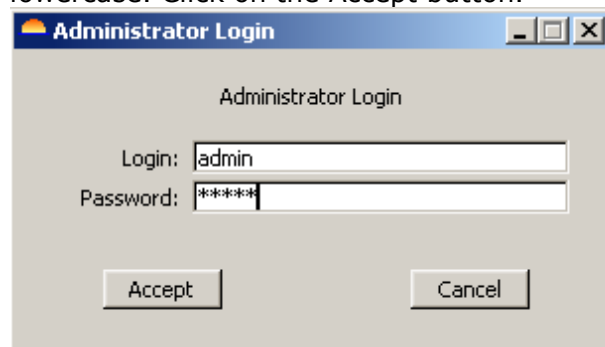


To unlock your application so it can be opened...

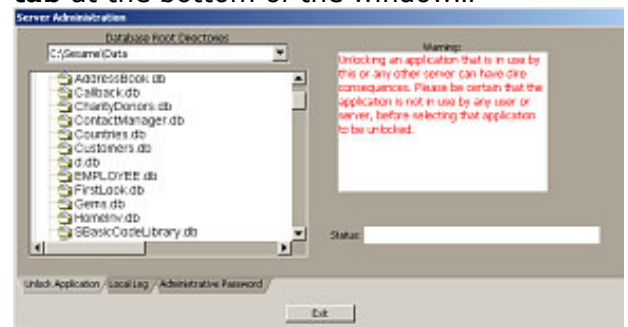
1. From the **File Menu**, select **Server Administration...**



2. **The Administrator Login dialog appears.** By default, the login name is "admin" and the password is "hello" both in lowercase. Click on the Accept button.

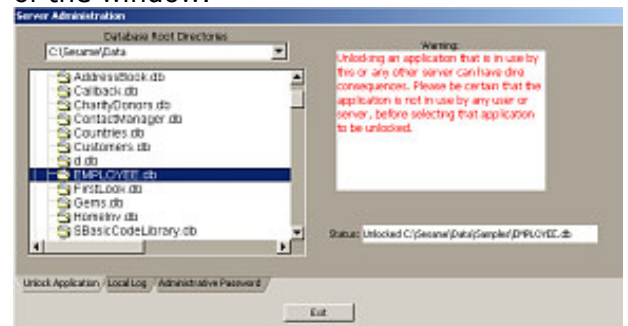


3. The Server Administration window appears. **Select the Unlock Application tab** at the bottom of the window...



4. In the large window where the files are listed, **browse until you see the application file that will not open.** Left-click on a subdirectory to see the files in that directory.

5. **Left-click** on the application file you want to unlock. Sesame displays a confirmation message in the status box at the lower right of the window.



6. **Click on the Exit button.** Once you have unlocked your application you can exit the server administration window and open your application.

Warning:

Unlocking an application that is currently in use by this or any other server can have dire consequences. Please be certain that the application is not in use by any user or server before selecting that application to be unlocked.