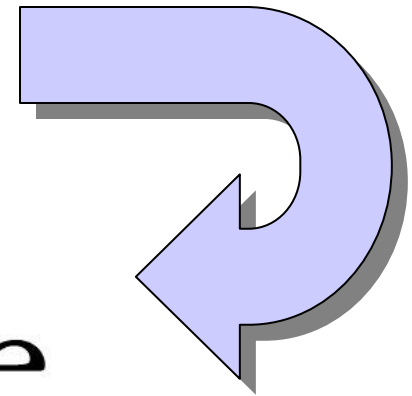


Sesame Q&A Translation

The Sesame Trial version is supplied with the Q&A translator feature disabled. This short presentation will outline the basic steps required to perform the translation from Q&A to Sesame with the full version of the package.

Simple, healthy Q&A databases will translate to Sesame easily. Complex databases or multiple database applications will require additional work, both in Q&A prior to translation and in Sesame after the initial translation. All of this is covered in the manuals.

The next few slides demonstrate an actual Sesame translation of an existing Q&A 5.0 database.



Sesame Q&A Translation

To start the translation process, you will need a healthy Q&A 4.0 or 5.0 Database. Make sure that the field names are legal for Sesame (In this example, State/County has been changed to StateCounty and State/City to StateCity with the /'s removed) and that the data is valid for the types of fields (dates in date fields, numbers in number fields, etc.).

Ensure that the database is healthy using the Q&A maintenance tools like Mass Update and Recovery.

Read and follow the steps outlined in the Q&A Database Translation Guide for more detailed instructions.

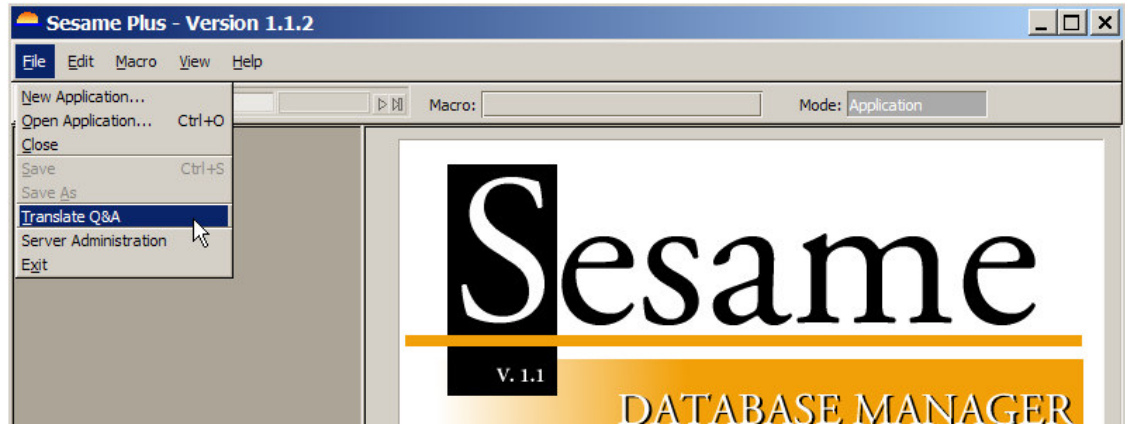
The screenshot shows a window titled 'QA5' with a dark blue background. The main text reads 'ZIPCODE, COUNTY, and AREACODE DATABASE' and 'PCTA - 2003'. A central box contains the following field mappings:

| | |
|-------------|-----------|
| Zip | 01002 |
| 3Dig | 010 |
| State | MA |
| Full County | Hampshire |
| Shrt County | Hampshire |
| City | Amherst |
| Area Code | 413 |
| Time Zone | EST |
| Grid Coord | E-6 |

Below this box, the text reads 'Key Fields - State/County MA-Hampshire' and 'State/City MA-Amherst'. At the bottom, a status bar shows 'QAZIP.DTF Retrieved form 1 of -- Total Forms: 43042 Page 1 of 1' and a list of function keys: 'Esc-Exit F1-Help Alt+F6-Table F7-Search F8-Calc F10-Continue'.

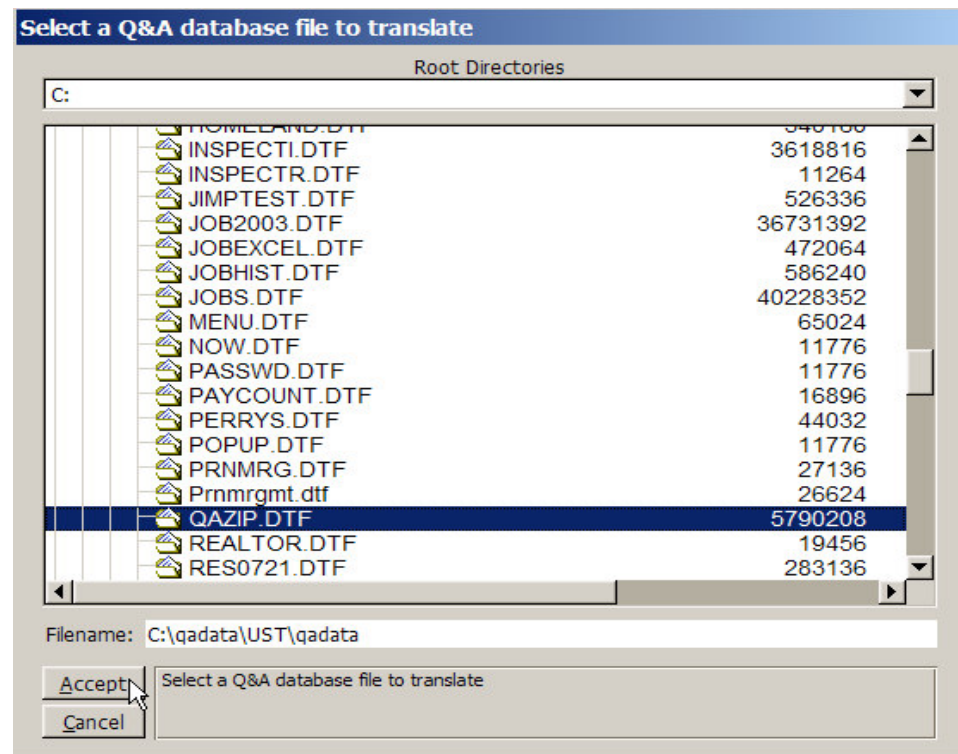
Sesame Q&A Translation

Start the Sesame program and click on File / Translate Q&A.



Select the Q&A database from the file dialogue box that opens.

This will be followed by a second, similar box where you will name your Sesame application. Your Q&A database will remain unchanged and still be available for use.

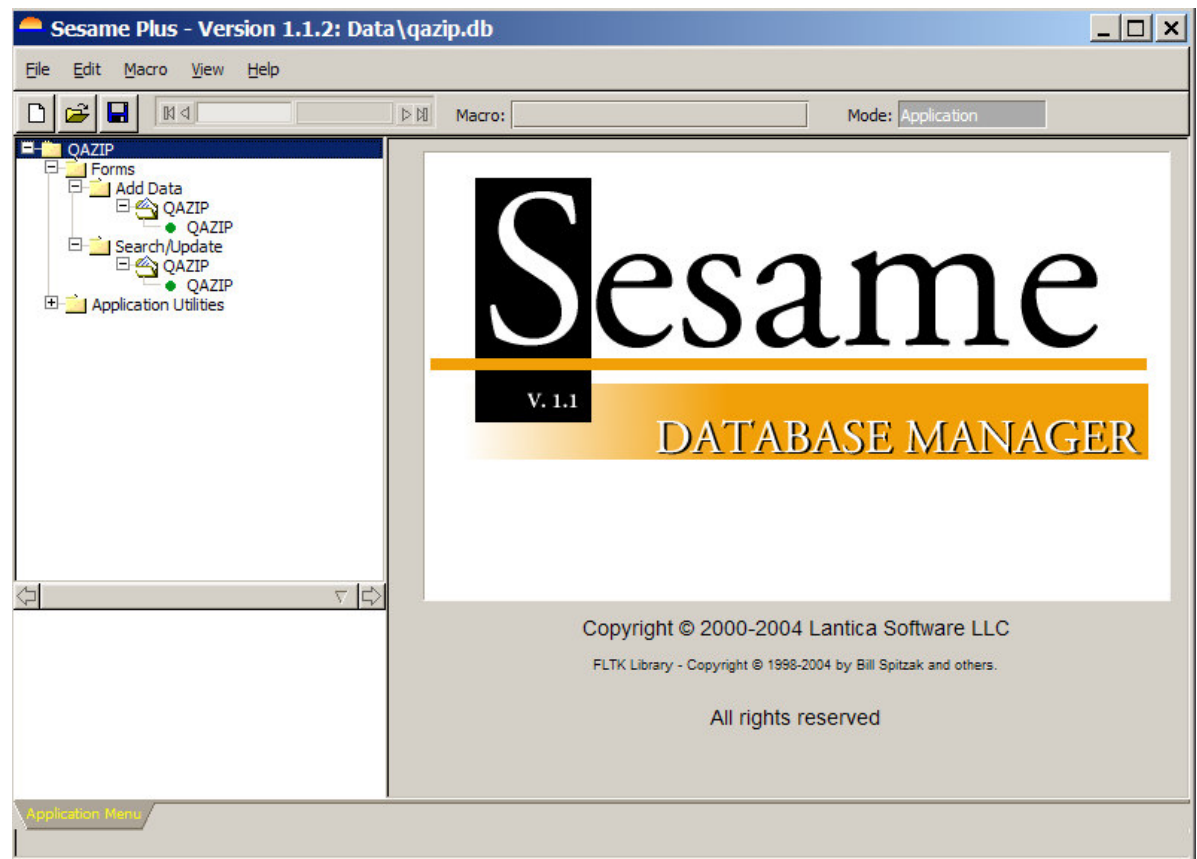


Sesame Q&A Translation

If your translation was successful (no errors) you will see your application in the Sesame menu tree.

The tree will present your application name and, under it, your database and form (same name) in both the Add Data and Search/Update modes.

To see your translation, just click on the form name (the one with the green dot) under the Search/Update branch of the menu tree. Your translated database will open.



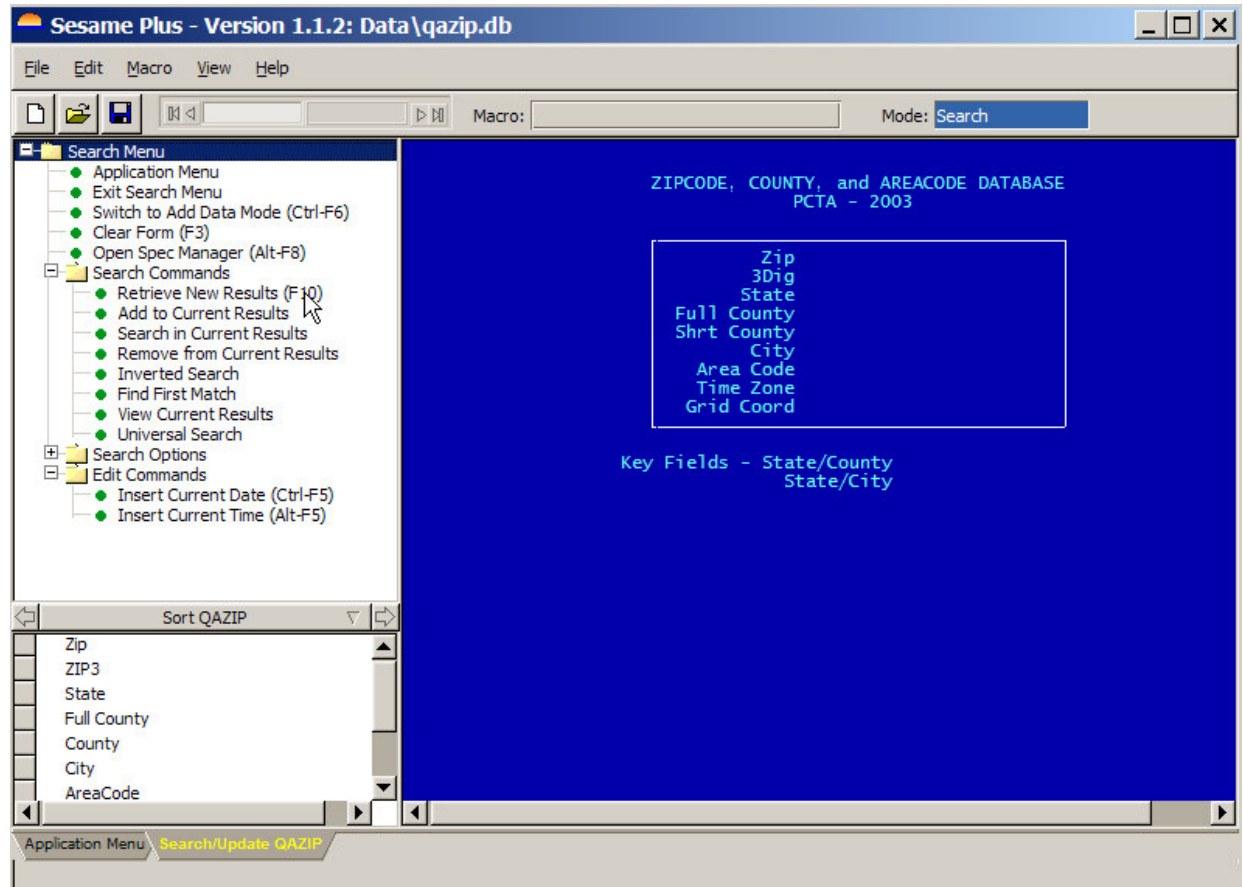
Sesame Q&A Translation

The initial translation is complete.

Your form and data are ready for use.

If you had a lot of fields and multiple pages, the translated form may appear somewhat busy and the data elements may be smaller than you would like. You can easily redesign this in Sesame's design module as shown later.

Click on the Menu Tree branch – Retrieve New Results (F10) or press the shortcut key (F10) to view the translated records.



Sesame Q&A Translation

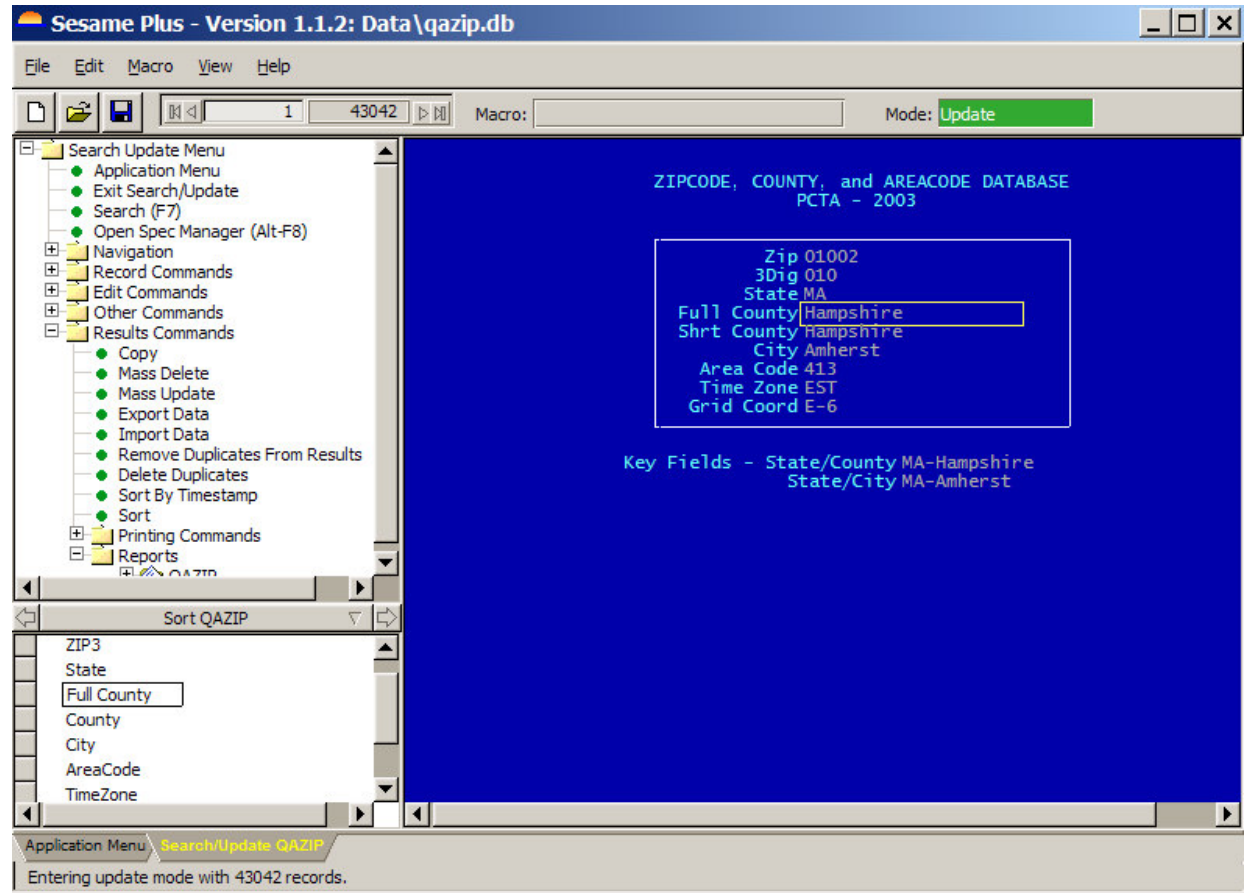
All translated data is available.

F10 moves forwards through records, F9 moves backwards through them, just like in Q&A.

The menu tree allows you to do many operations on the retrieved data.

The amount of records in the 'found set' are displayed at the top and bottom of the window.

To retrieve a new set of records press F7 or click on the tree selection – Search (F7). You will be taken to the search, or retrieve, screen.



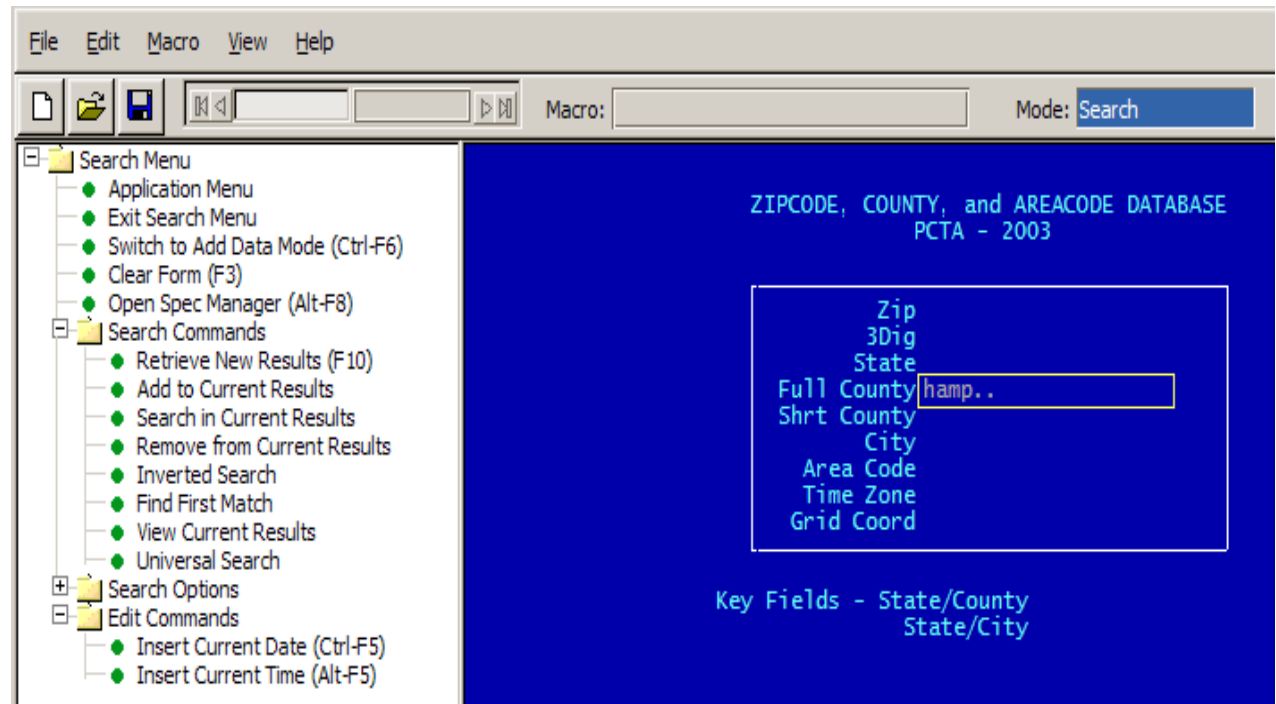
Sesame Q&A Translation

All fields on the form are available for specifying retrieve criteria just like in Q&A.

Specification criteria is the same as in Q&A. (e.g. "hamp.." in the Full County field will get all records where the county starts with hamp).

Multiple retrieve conditions can be specified in multiple fields. Multiple level searches can be performed on the same set of records.

Pressing F10 or using the Menu Tree retrieves the new records.



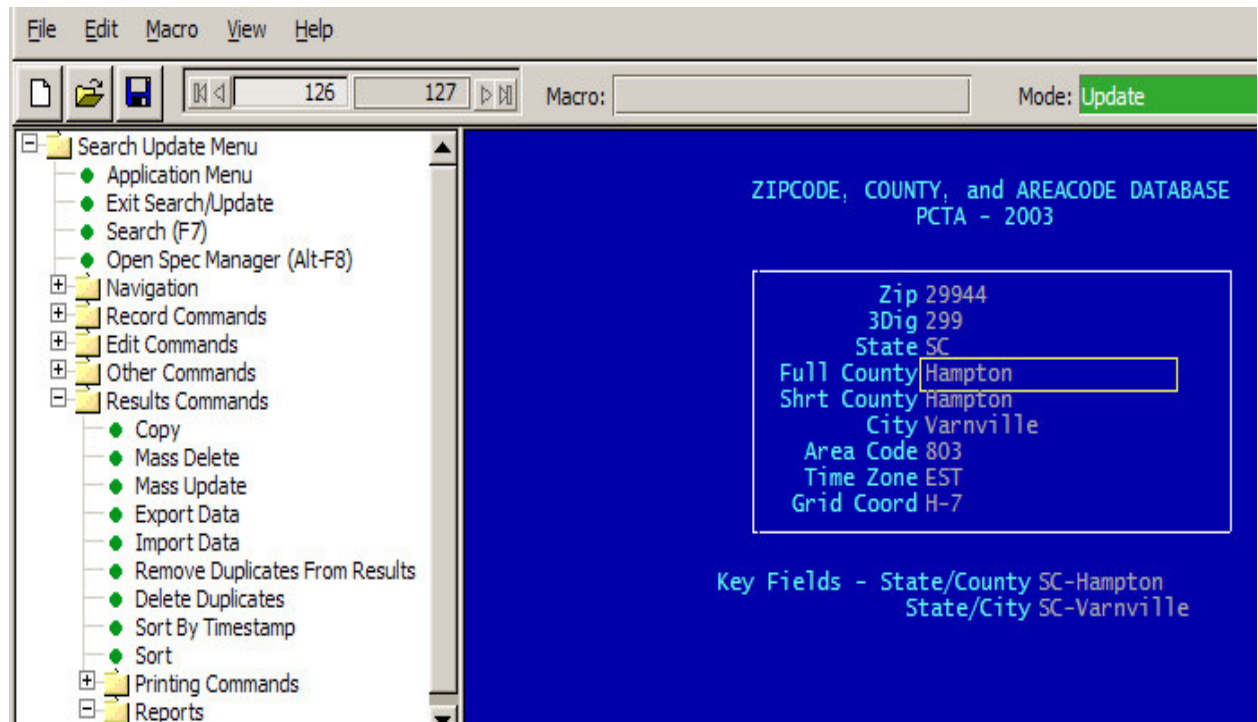
Sesame Q&A Translation

New data set is displayed. Note 127 records were retrieved here.

Menu Tree selections allow all types of operations to be performed on the retrieved set of data (copy, export, import, mass update, removal of duplicate records, sorting, etc).

New records can be added by exiting the search mode and choosing the form in Add Data mode from the Application Menu Tree.

For a better look to the forms and to Take advantage of Sesame's features, the application can be redesigned by choosing Redesign Current Application from the Application Menu Tree.



Sesame Q&A Translation

Sesame Translates your Q&A Programming converting *field numbers to element names* but keeps the programming the same.

Sesame Translated Programming

```
[ZIP3] [On Element Entry] **
```

```
ZIP3=@lt(Zip,3);cnext
```

```
[StateCounty] [On Form Change] **
```

```
If StateCounty="" then StateCounty=State+"-"+Full County
```

```
[StateCity] [On Form Change] **
```

```
If StateCity="" then StateCity=State+"-"+City
```

Q&A Original Programming

```
State #5
```

```
Full County #8
```

```
City #9
```

```
Zip #10
```

```
Zip3<#20:#20=@lt(#10,3);cnext
```

```
State/County #30:If #30="" then #30=#5+"-"+#8
```

```
State/City #40:If #40="" then #40=#5+"-"+#9
```

Sesame Q&A Translation

In a very few minutes with Sesame Designer your translated Q&A database can be converted to a good looking Sesame form with all data, programming, and other Q&A translated features intact.

